



ANNUAL REPORT 2020-2021

Association for Socio-Economic Advancement of Bangladesh (ASEAB)

Email: aseab2000@yahoo.com

Tel: +8801747040971

Website: www.aseab.org.bd

Address: PabnaSadar, Pabna

Association for
Socio-Economic Advancement
of Bangladesh
aseab
WORKING FOR A JUST SOCIETY

TABLE OF CONTENTS

Introduction-----

Project Highlights-----

At a Glance Project Beneficiaries Coverage-----

Financial Summary-----

Progress of Program/Project-----

Challenges-----

Conclusion-----



ASEAB

Association for Socio- Economic Advancement of Bangladesh (ASEAB) is a non-government, non-political and a voluntary development organization formally came into being in 1993 and obtained registration with the NGO Affairs Bureau in 1995, Trust Act in 2002, Micro Credit Regulatory Authority in 2008, Joint Stock Company in 2009 though preparatory activities started in early 1990s. It is founded and run by a group of dedicated social workers, committed professionals, multi-disciplinary experts and the representatives of the target groups. The head office of ASEAB is situated in nearly two acres of its own land in a village named Khaerbagan, 10 kilometers away from the district headquarters of Pabna. The area is in the catchments of the mighty river "Padma", which is characterized by acute poverty, malnutrition, lack of literacy, floods, river erosion, and loss of habitat and decrease in agricultural land by recurring floods. The miserable plights of the people are being now exacerbated by the adverse impacts of climate change. The economy of the area principally depends on agriculture, which is again vulnerable to natural calamities, shortage of agricultural inputs and implements and decreasing cultivable land. In this backdrop, ASEAB devotes its all-out efforts with different program interventions to free the people from the clutches of persistent poverty and hunger.

ASEAB has been working from 2016 as a development partner with BDesh Foundation USA to develop livelihood of destitute community households and providing humanitarian assistance to the needy people of Bangladesh. In 2017, the scope of work expanded through the mutual partnership with BDesh Foundation USA to provide assistance to Myanmar nationals who were forcibly displaced from Myanmar. In this way the bond between the two organizations became stronger and stronger. ASEAB has implemented 24 projects in the last one year from November 2020 to October 2021. It has implemented the following project in the Rohingya camp through health, education, relief, shelter reconstruction etc. It is also providing extensive assistance to remote areas of Bangladesh through long-term and short-term projects. In particular, the organization has assisted women entrepreneurs development, health care, free cataract surgery, child education, safe water and sanitation, disaster food, winter clothing, and free oxygen supply to patients affected by Covid-19. Last year, a total of 89000 helpless and disadvantaged people received assistance through various projects. Given the current context, the BDesh Foundation is keen to undertake a number of projects in Bangladesh to make the sustainable development, such as SabujPalli Enterprise, SabujPalli Safe Food etc. ASEAB would like to thank all the donors and members of the Board of BDesh Foundation for their unconditional love of humanity. ASEAB has to prepared an annual report of BDesh Foundation USA funded project from 2020 - 2021.



ASEAB strives to create a well-being society that ensures social, economic, political, cultural, humanitarian, ethical, moral and environmental rights of the people.



ASEAB aims at improving the living standard of the under- privileged and bringing about a qualitative change ensuring sustainable development in the society by emancipating the destitute, especially women, children and handicapped, physically challenged people from the clutches of multifaceted social deprivation, inequalities and injustices.



- **Humanity and humility:** Serving the humanity and the hapless with humility;
- **Mutual respect and empathy:** Upholding the values of mutual respect and empathy;
- **Cultural diversity and sensitivity:** Showing respect to cultural diversity while being sensitive to individual privacy and special needs;
- **Inclusive development:** Ensuring inclusive development leaving no one behind;
- **Justice and equity:** Upholding the spirit of justice and equity irrespective of color, creed, religion, ethnicity and sex;
- **Good governance:** Promoting the culture of good governance; and
- **Ethical values:** Setting standards for higher ethical and moral values and encouraging to practice them;

ASEAB
HEAD
OFFICE



EXECUTIVE SUMMERY

Association for Socio-Economic Advancement of Bangladesh (ASEAB) has been striving its hard with a vision to build a prudent nation free from hunger and poverty whereevery citizen will lead a life with dignity and equity. In 2021, ASEAB reviewed its strategic plan for the period of 2017- 2021; aligning with Bangladesh government's 7th 5-year plan and considering the Sustainable Developments Goals (SDGs). In the reviewed strategic plan major programs and priorities were organized in such a way so that it could support and contribute to achieve the targets of 7th 5-year plan as well as can complement to the efforts of Bangladesh government to attain the SDGs. One of our important strategic programs is micro-finance that is contributing substantially to poverty reduction and eliminating hunger (SDS 1and 2) from the country through financial inclusion and employment generation of the program participants. Other strategic programs like education, livelihood development, health, nutrition and WASH, rights and governance, DRR & CCA are directly supporting for attaining the SDGs like Good Health and Well-Being, QualityEducation, Gender Equality, Clean Water and Sanitation, Reduce Inequality, and Climate Action. This annual report attempts to highlight major programs and activities that were conducted in ASEAB' s working areas in 2020-2021 and documents the positive changes that were brought in the lives and livelihoods of community people with whom and forwhom ASEAB does work. A very short brief of this progressis stated below:

Micro finance program is a very important strategic element of ASEAB's approach that has extremely been effective in improving the living standard of common people by assisting them with mechanisms of financial inclusion and involving them in income earning activities.

This year ASEAB has 7968 people under its financial inclusion umbrella and extended a total of Tk 1,268,000/- crore as loan. Through these financial inclusion arrangements program participants invested their resources in different types of micro- enterprises, and these investments created employment opportunities for about 89000 people. ASEAB's education program conducts multiple activities to ensure quality education for the children belonging to various zones of exclusion and deprivation. This year a total of 807 children (58% girls) were enrolled in ASEAB established formal and non-formal schools and coaching support centers. But this year COVID 19 school was fully closed as per instruction of govt.. Like in previous years, ASEAB this year has provided primary healthcare services through ASEAB community hospital, community health centers and referred medically complicated patients to secondary or tertiary hospitals for better treatment. ASEAB provided 75 oxygen cylinders to hospital, corona patients and established support centers to the assistance corona patients by emergency oxygen support. Under this health program, 3730 patients received primary health check-up, treatment, and medicine. Six hundred seventy-four adolescent girls got organized through forming 20 adolescent forums and received life-skill education including awareness on reproductive health, WASH, VAW, nutrition and other social issues. Three hundred beneficiaries received IGA skill training. In this reporting year ASEAB distributed Tk. 60,00,000 to 300 project beneficiaries to invest in different selected profitable IGAs. In order to respond to humanitarian crises ASEAB has been working in Rohingya camps for the provisions of food, and nonfood items, health and medical facilities, WASH, and shelter support since September 2021. Under this response initiative, 89,733 Rohingya Refugees received various supports. ASEAB distributed two medical ambulances to the Cox's Bazar Civil Surgeon office and installed 200 street lamps in Rohingya camps.



ASEAB HEAD
OFFICE

Abbreviation Explanation

| | |
|--------------|--|
| <i>ASEAB</i> | Association for Socio-Economic Advancement of Bangladesh |
| <i>BOT</i> | Board of Trustees |
| <i>CAA</i> | Climate Change Adaptation |
| <i>DRR</i> | Disaster Risk Reduction |
| <i>IGA</i> | Income Generating Activities |
| <i>IMF</i> | Islamic Micro Finance |
| <i>MBBS</i> | Bachelor of Medicine, Bachelor of Surgery |
| <i>ME</i> | Micro Enterprise |
| <i>MEL</i> | Micro Enterprise Loan |
| <i>NCTB</i> | National Curriculum and Textbook Board |

ORGANIZATIONAL STRUCTURE

| Authority | No | Date |
|--------------------------------------|-------------------|------------|
| FD Registration (NGO Affairs Bureau) | 950 | 28.06.1995 |
| Trust Registration | 88 | 12.10.2002 |
| Joint Stock Companies & Firms | S -10672 | 10.12.2009 |
| Micro Credit Regulatory | 00104-03016-00164 | 16.03.2000 |

General Committee:

1. Mahfuja Khanam
2. Md. Abdul Latif
3. Dr. Umainaa Chowdhury Bonna
4. Kazi Minhazul Alam
5. Md. Abdul Mazid
6. Dewan Kaniz Naima
7. Qazi Farzana Afreen
8. Kaniz Fatema Rahman
9. Md. Mozaffar Hossain
10. Abul Kalam Azad
11. Md. Golam Dostogir Harun
12. Md. Samsuzzaman
13. Md. Menhaj Uddin
14. Edwin Ranjan Hira
15. Sree Gopal Chando Mondal
16. Sufi Md. Ali Afzal
17. Farhana Sharif

Executive Committee

- | | |
|-------------------------|------------------|
| 1. Sufi Md.Ali Afzal | Chairperson |
| 2. Mahfuja Khanam | Secretary |
| 3. Md. Mozaffar Hossain | Treasurer |
| 4. Md. Abdul Mazid | Executive member |
| 5. Md. Abul Kalam Azad | Executive member |
| 6. Edwin Ranjan Hira | Executive member |
| 7. Kazi Farzana Afreen | Executive member |

CORE VALUES

- Satisfying the Creator by serving the humanity;
- Ensuring the right to participation of marginalized in development process;
- Promoting the culture of good governance in all activities of the organization;
- Upholding the values of mutual respect and cooperation;
- Ensuring inclusive development approach through delivering services based on justice and equity irrespective of color, religion, ethnicity and sex;
- Ensuring participatory decision-making process;
- Encouraging and practicing higher ethical values at all levels of the organization and abstaining from immoral activities.

MESSAGE OF EXECUTIVE DIRECTOR



Mahfuja Khanam
Executive Director

This is my great pleasure to present the Annual report of Association for Socio-Economic Advancement of Bangladesh (ASEAB) for the financial year of 2020-2021 as the Chairperson of Board of Trustees. This report is a brief account of activities and programs that ASEAB conducted in this period in its working areas in collaboration with its program participants and stakeholders. I would like to extend my heartfelt thanks and congratulation to all concerned for their valuable contribution towards successful execution of planned activities for the reporting period. ASEAB conducts its multi sectoral comprehensive development programs with the objectives of bringing meaningful changes in the lives of most marginalized segment of society who do suffer from various forms of exclusion and deprivation. With the active cooperation of various stakeholders, like previous years, this year too, ASEAB's management and staff members with their meticulous planning and hard work have been able to attain desired level of success in combating poverty, illiteracy, disaster and climate change related challenges; creating WASH infrastructure, promoting women rights, addressing to humanitarian crisis and accessing to public resources by its program beneficiaries..In this year we have faced COVID-19 pandemic that causes to reduce the target I sincerely would like to congratulate all of them for their commendable jobs. We would also like to extend our special thanks to the community people, government officials, NGOs, CBOs, elected representatives, banks and other financial institutions, development partners from home and abroad, networks and private sector institutions for their excellent support in advancing ASEAB's development efforts. Finally, I would like to offer my deep gratitude to our board of trustees and Executive Committee members for their all-out support and thus for making outstanding contribution towards building a poverty free, just, non-discriminating and inclusive Bangladesh.



PROJECT HIGHLIGHTS

2020 - 2021

Core Program

1. "ASEAB Community Shastho Sheba Kendro."
2. "ASEAB Shikha Niketon."
3. "ASEAB Microfinance Program."

Rohingya Relief

1. "Emergency Primary Healthcare Services for the Rohingya RefugeesPhase-7".
2. "Emergency Primary Healthcare Services for the Rohingya RefugeesPhase-8".
3. "Emergency Primary Healthcare Services for the Rohingya RefugeesPhase-9"
4. "Emergency Shelter Repair for Rohingya Refugees".
5. "Emergency Shelter Rebuilding and Maintenance of Rohingya Refugees Due to Fire and Mudslide"
6. "Qurbani Meat Distribution to the Rohingya Refugees in Bangladesh-2021."
7. "Ramadan &EidUIFitre Food Package for Ultra poor-2021"

Child Welfare Program

8. "Improving the Mental, Physical Health and Nutritional Status of Rohingya Children-1."
9. "Improving the Mental, Physical Health and Nutritional Status of Rohingya Children-2."
10. "Child Welfare Project Phase-2"-Sylhet.
11. "Preprimary Education and Nutrition Service Project"-Pabna.

Eye Care Program

12. "Low Cost Cataract Surgery for the Destitute People of Bangladesh"

Shobuj Polly Program

13. "Shobuj Polly Jibika and Human Development Project" Phase-1 Mymensingh
14. "Shobuj Polly Livelihoods Project" Phase-2 Mymensingh.
15. "Early Child Education and Women Skill Development Project"-Host Community Cox.

WASH Program

16. “Shobuj Polly WASH Project- Mymensingh
17. “Shobuj Polly Water, Sanitation and Hygiene Project for Char Dwellers”.-Pabna

Food Relief

18. “Ramadan & Eid U Fitre Food Package for Ultra poor-2021”-1
19. “Food Support in Bangladesh for Host Community & Other part of the Country-2021”-2
20. “Qurbani Meat Distribution to the Poor and Needy People in Bangladesh-2021”

Disaster Relief

21. Blanket Distribution Direct BDesH Representative of Bangladesh.
22. Oxygen Supply to Save the Lives of Corona Patients.
23. Oxygen Supply to Save the Lives of Corona Patients -Phase-2
24. Oxygen Supply to Save the Lives of Corona Patients -Phase-3 not done.

At a Glance Beneficiary Coverage

| Theme | Project | Beneficiary coverage |
|-------------------------|---|----------------------|
| Rohingya relief | Primary health | 58589 |
| | Shelter rebuilding (Phase-1,2) | 300 |
| | Qurbani meat | 2015 |
| | Rmadan food | 1800 |
| | Blanket distribution | 600 |
| Education | Child Learning Center -Cox's Bazar | 300 |
| | Child Welfare Project- Sylhet | 180 |
| | Preprimary Education & Nutrition -Pabna | 300 |
| | ASEAB Shikha Niketon | 260 |
| Health | Low cost cataract surgery | 1031 |
| | ASEAB Community Shastho Sheba Kendro | 7000 |
| Livelihoods | Jibika & Human Development-1 st phase | 300 |
| | Shobuj Polly Livelihoods Project -2 nd phase | 300 |
| | ASEAB Microfinance Program | 7000 |
| WASH | WASH -Mymensingh | 432 |
| | WASH-Pabna | 320 |
| Humanitarian Assistance | Ramadan Food distribution ph-1,2 | 2800 |
| | Qurbani meat distribution | 4187 |
| | Blanket distribution | 1000 |
| | Oxygen support to Corona patients | 1019 |
| Total | | 89733 |



Association for
Socio-Economic Advancement
of Bangladesh
aseab
WORKING FOR A JUST SOCIETY



ASEAB SHIKHA NIKETON



LOCATION

Bharara, Pabna Sadar, Pabna



DONOR

ASEAB



OBJECTIVE

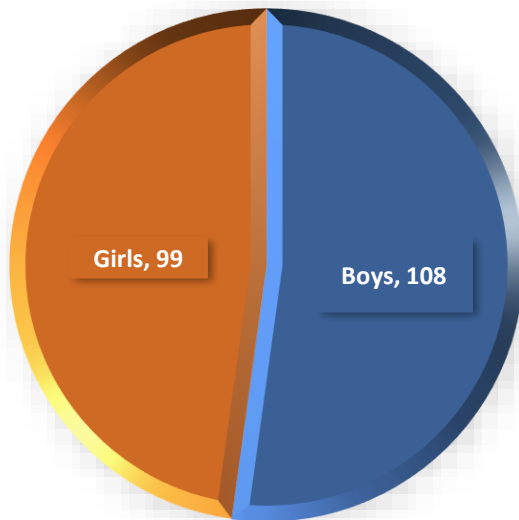
Enhance the primary education in the char areas



Activity



ASEAB Shiksha Niketon serves about 10,000 people living in the stable char areas that are still under-developed with very limited educational amenities and less education rate those community with a population around 10,000, living in the bank of the river Padma and border areas of Kustia district. The children from poor and extreme poor families remained deprived of education for various reasons including absence of required number of schools in the villages neighborhoods as well as lack of opportunities to receive education in their community. All books, teaching aids curriculum and instructions of education are followed by NCTB guideline. ASEAB introduced Pre-Primary and primary education by its own fund with technical assistance of govt. education department.



FACTS

| Class | Boys | Girls | Total |
|------------|------|-------|-------|
| Play group | 28 | 31 | 59 |
| Class-I | 22 | 13 | 35 |
| Class-II | 14 | 16 | 30 |
| Class-III | 17 | 06 | 23 |
| Class-IV | 14 | 16 | 30 |
| Class-V | 13 | 17 | 30 |
| | | | |



HNW

HEALTH NUTRITION AND WASH

Association for
Socio-Economic Advancement
of Bangladesh
aseab
WORKING FOR A JUST SOCIETY



ASEAB COMMUNITY HOSPITAL



LOCATION

Pabna Sadar, Pabna



DONOR

ASEAB

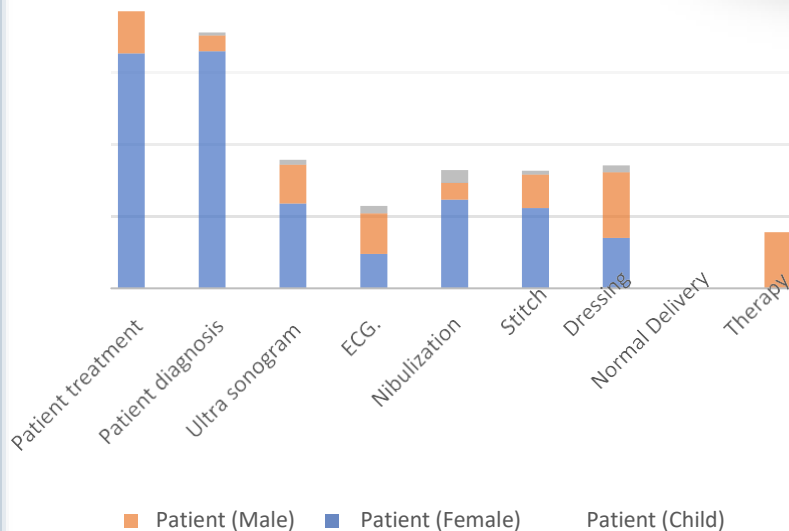


OBJECTIVE

ASEAB has started intervening mother and child health care activities in 2003. The program aims to promote health status of the community by providing health services at an affordable cost for the village dwellers. Inside the head office premises, a community health center, named ASEAB Community Hospital is functional. It ensures community participation as well to implement its activities.



FACTS



| | | |
|-------------------|---|------------|
| Patient Treatment | : | 3730 |
| Normal Delivery | : | 24 |
| Patient Refer | : | 288 |
| Pathological Test | : | 1680 (per) |
| Day observance | : | 03 |
| Health Camp | : | 08 |

FINANCIAL SUMMARY OF DONOR FUND

2020 -2021

| Project name | Duration from -to | Total approved budget | Budget of reporting year | Received fund in this year | Expensed | Remarks |
|---|----------------------|-----------------------|--------------------------|----------------------------|----------|-----------|
| Emergency Primary Healthcare Services for the Rohingya Refugees Phase-7" | 01.07.20 to 27.12.20 | 6037000 | 6037000 | 5247294 | 5247294 | Completed |
| Emergency Primary Healthcare Services for the Rohingya Refugees Phase-8" | 01.03.21 to 31.08.21 | 5775000 | 5775000 | 5450873 | 5450873 | Completed |
| Emergency Primary Healthcare Services for the Rohingya Refugees Phase-9" | 20.09.21 to 19.03.22 | 5492500 | 5492500 | 5460186 | | Ongoing |
| Emergency Shelter Repair for Rohingya Refugees". | 10.09.20 to 09.12.20 | 2100000 | 2100000 | 2078602 | 2078602 | Completed |
| Emergency Shelter Rebuilding and Maintenance of Rohingya Refugees Due to Fire and Mudslide" | 01.07.21 to 30.09.21 | 5525000 | 5525000 | 5466384 | 5466384 | Ongoing |
| Qurbani Meat Distribution to the Rohingya Refugees in Bangladesh-2021." | 01.07.21 to 10.08.21 | 2975000 | 2975000 | 2975000 | 2975000 | Completed |
| Improving the Mental, Physical Health and Nutritional Status of Rohingya Children-1." | 01.12.20 to 31.05.21 | 3740000 | 3740000 | 3692961 | 3692961 | Completed |
| Improving the Mental, Physical Health and Nutritional Status of Rohingya Children-2." | 01.09.21 to 31.03.21 | 3580000 | 3580000 | 3548141 | 3548141 | Ongoing |
| Child Welfare Project Phase-2"-Sylhet. | 01.07.19 to 30.06.21 | 7980000 | 3890460 | 3847009 | 3847009 | Completed |
| Preprimary Education and Nutrition Service Project"-Pabna. | 01.07.19 to 31.12.20 | 2772000 | 1688066 | 832784 | 832784 | Completed |
| Low Cost Cataract Surgery for the Destitute People of Bangladesh" | 01.07.19 to 30.06.21 | 5208000 | 2604000 | 2573067 | 2573067 | Completed |
| Shobuj Polly Jibika and Human Development Project" Phase-1 Mymensingh | 01.05.16 to 30.04.21 | 14800000 | 1506557 | 1493658 | 1493658 | Completed |

| | | | | | | |
|---|----------------------|--------------------|-------------------|-------------------|-------------------|-----------|
| Shobuj Polly Livelihoods Project" Phase-2 Mymensingh. | 01.02.1 to 31.01.22 | 12375000 | 7400700 | 7349635 | | Ongoing |
| Early Child Education and Women Skill Development Project"-Host Community Cox. | 01.01.20 to 31.12.21 | 6375000 | 6375000 | 1132485 | 1132485 | Ongoing |
| Shobuj Polly WASH Project-Mymensingh | 01/08/20 30/07/21 | 318200 | 318200 | 318200 | 318200 | Completed |
| Shobuj Polly Water, Sanitation and Hygiene Project for Char Dwellers".- Pabna | 01.10.21 to 31.12.21 | 2197000 | 2197000 | 2199236 | | Ongoing |
| Ramadan & Eid Ul Fitr Food Package for Ultra poor-2021" | 01.03.21 to 30.05.21 | 4610000 | 4610000 | 4563858 | 4563858 | Completed |
| Food Support in Bangladesh for Host Community & Other part of the Country-2021" | 01.04.21 to 30.05.21 | 4200000 | 4200000 | 2427414 | 2427414 | Completed |
| Qurbani Meat Distribution to the Poor and Needy People in Bangladesh-2021" | 01.07.21 to 30.08.21 | 5950000 | 5950000 | 5873142 | 5873142 | Completed |
| Oxygen Supply to Save the lives of Corona Patients | 01.06.21 to 31.07.21 | 510000 | 510000 | 486070 | 486070 | Completed |
| Oxygen Supply to Save the lives of Corona Patients Phase-2 | 01.07.21 to 30.09.21 | 765000 | 765000 | 734143 | 734143 | Completed |
| Total | | 103,284,700 | 77,239,483 | 67,750,142 | 52,741,085 | |

Note: 1. Shobuj Polly WASH Project implemented by DBC in Mymensingh.

2. Early Childhood Development and Women Empowerment project in host community is ongoing but until the 2nd year fund January 2021 to December 2021 did not get.

3. Oxygen Supply to save the lives of Corona patients Phase -3 project has approved but not available of fund during project period Sept-Oct 21 this project activities not done.

PROGRESS OF PROGRAM/PROJECT

In this reporting period 2020 to 2021 some project period has finished and some project started and will be finished next year. In this reason, progress of some project has shown as partially complete during reporting period.

1. Emergency Primary Health Care for Rohingya Refugees 2 projects phase-7,8 duration has finished and another one phase-9 ongoing .

Major activities :

- Emergency primary health service to the Rohingya men, women, adolescent and children ;
- Regular Anti natal and post natal check-up of pregnant and lactating mother and child.
- Treatment and medicine support;
- Awareness on primary health, personal hygiene, reproductive health;
- Sanitary napkin, hand wash, musk, soap distribution;
- Awareness on COVID-19 health rules and social distance;
- Refer to secondary health post of medically complicated patients.

Target & Achievement

| Name Activities | Target | Achievement | Deviation | Remarks |
|---|---------|-------------|-----------|---|
| Free treatment & medicine supply | 85,689 | 58589 | 27100 | Male : 10447 Female: 22622 Child: 25520 |
| Patient Referral | - | 362 | 00 | Male : 55 Female: 145 Child: 162 |
| Soap Distribution | 7700 | 7700 | 00 | |
| Sanitary napkin distribution for women & girls | 7700 | 7700 | 00 | |
| Musk distribution for protection covid-19 | 13,000 | 13000 | 00 | |
| Hand sanitizer distribution | 7700 | 7700 | 00 | |
| Mosquito net distribution for protection Dengue | 3289 | 3289 | 00 | |
| Temporary Birth control material distribution | 2000 | 2000 | 00 | |
| Birth control pill distribution | 235 pac | 235 pac | 00 | |
| Awareness session | 16 | 12 | 04 | |

2. Emergency Shelter Repair for Rohingya Refugees:

This project period was 10.09.2020 to 09.12.2020 and total target was 105 households.

The Rohingya family who are widow, large family, orphan affected by mudslide and lost their shelter different causes they are selected for repair their shelters. Also Madrasa and Mosque were included this project for repair and maintenance.

| Name Activities | Target | Achievement | Deviation | Remarks |
|------------------------------------|--------|-------------|-----------|---------|
| Beneficiary survey | 250 | 265 | | |
| Beneficiary selection | 105 | 105 | | |
| Shelter repairing and maintenance | 105 | 150 | | |
| Handover to CIC through camp Majhi | 105 | 150 | | |

Most of the work was repair so, less cost to work completion and beneficiary coverage has increased.

3. Emergency Shelter Rebuilding and Maintenance of Rohingya Refugees Due to Fire and Mudslide.

Officially this project period has completed 30 September 2021 but shelter rebuilding work is ongoing due to COVID 19 restriction into Rohingya camp. ASEAB has taken approval from CIC for time extension and 100% work will be completed within 15 November 2021.

| Name Activities | Target | Achievement | Deviation | Remarks |
|--|--------|-------------|-----------|---------------------------------------|
| Beneficiary survey | 250 | 250 | | |
| Beneficiary selection shelter rebuilding | 150 | 150 | | |
| Shelter rebuilding and handover | 150 | 126 | 24 | Within 15 th Nov. will end |

4. Qurbani Meat Distribution to the Rohingya Refugees in Bangladesh-2021.

5. Qurbani Meat Distribution to the Poor and Needy People in Bangladesh-2021.

Under this project CLC students, widow, orphan, near the Rohingya family of Health Post and preferably who are eligible to get Qurbani meat. According to rules and procedure of the govt ASEAB provide the cows and goats in Rohingya camp and ensure slaughter and distribution among target people through inside and outside project staffs of camp. ASEAB also distributed Qurbani meat to the destitute people in other district of Bangladesh like Pabna, Mymensingh, Sylhet, Dhaka, Cox's bazar and Kuakata district.

| Name Activities | Target | Achievement | Deviation | Remarks |
|-----------------|--------|-------------|-----------|---------|
|-----------------|--------|-------------|-----------|---------|

| | | | | |
|----------------------------|-------------|-------------|------------|--|
| Cow for Rohingya | 30 | 30 | | |
| Goat for Rohingya | 50 | 50 | | |
| Total beneficiaries | 2000 | 2015 | +15 | |
| Cow for Host community Cox | 10 | 10 | | |
| Cow for Pabna | 08 | 08 | | |
| Cow for Mymensingh | 17 | 17 | | |
| Cow Kustia | 04 | 04 | | |
| Cow for Sylhet | 03 | 03 | | |
| Cow for Dhaka | 07 | 07 | | |
| Cow for Kuakata | 05 | 05 | | |
| Cow for Comilla | 03 | 03 | | |
| Goat for Host community | 15 | 15 | | |
| Goat for Kustia | 10 | 10 | | |
| Goat for Mymensingh | 20 | 20 | | |
| Goat for Dhaka | 10 | 10 | | |
| Goat for Kuakata | 10 | 10 | | |
| Total beneficiaries | 4150 | 4187 | +37 | |

| Place | Cow | Goat | Beneficiary |
|------------------------------|-----------|------------|-------------|
| Rohingya Camp | 30 | 50 | 2015 |
| Other district in Bangladesh | 57 | 65 | 4187 |
| Total | 87 | 115 | 6202 |

6. Ramadan & EidulFitre Food Package for Ultra poor-2021

During Ramadan and before EidulFiterfood packages have distributed in Rohingya camp, host community of Cox's Bazar and other district in Bangladesh. Total 4600 food packages, 3000 packages in 1st project and 1600 packages food in 2nd project distributed among Pabna, Mymensingh, Sylhet, Dhaka, Barishal, Cox's Bazar host and Rohingya camp. Each package contain rice-10 kgs, lentil 2 kgs, v.oil-1 litre, salt-1 kgs, sola-2 kgs, sugar-1kg, potato-3kgs, lachha semai-400 gm, powder milk-200gm, kismis+ groundnuts and children toy.

| Name Activities | Target | Achievement | Deviation | Remarks |
|---|-------------|-------------|-----------|--------------------|
| Food package distribution Rohingya | 1800 | 1800 | | |
| Food package distribution Host Community | 200 | 200 | | |
| Food package distribution Sylhet | 200 | 200 | | |
| Food package distribution Haluaghat | 300 | 300 | | |
| Food package distribution MymensinghSadar | 900 | 900 | | |
| Food package distribution Dhaka | 300 | 300 | | |
| Food package distribution Other districts | 980 | 0 | 0 | Adjust only budget |
| Food package distribution Barishal | 200 | 200 | | |
| Food package distribution Pabna | 500 | 500 | | |
| Food package distribution Kustia | 200 | 200 | | |
| Total | 5580 | 4600 | | |

7. Improving the Mental, Physical Health and Nutritional Status of Rohingya Children-1 & 2

Under this project 4 child learning centers (CLC) containing 300 students 6 to 13 years old. Each center 75 students in two shifts,, they are learning English, Mathematic through Burma language, drawing, co-curriculum activities and also being aware on disaster preparedness, health hygiene practices, reproductive health and issue based lessons.ASEAB is following UNICEF curriculum and using book and teaching materials.

Following table contain 02 project's report.

| Name Activities | Target | Achievement | Deviation | Remarks |
|---|---------|-------------|-----------|---------|
| # of Learning centers established | 04 | 04 | 00 | |
| # of children enrolled | 300 | 300 | 00 | |
| # of boys | 139 | 139 | 00 | |
| # of girls | 161 | 161 | 00 | |
| Child progress assessment done | 300 | 300 | 00 | |
| # of sponsored child | 300 | 157 | 143 | |
| CLC Repair & maintenance | 04 | 04 | 00 | |
| Mat purchase | 80 | 80 | 00 | |
| Plastic purchase | 02 | 02 | 00 | |
| Steel trunk purchase | 01 | 01 | 00 | |
| Tool purchase for teacher | 01 | 01 | 00 | |
| Folding table purchase | 01 | 01 | 00 | |
| Soap, Tiuse& towel purchase | 4 times | 4 times | 00 | |
| Picture chart purchase | 2 times | 2 times | 00 | |
| Alphabet chart purchase | 08 | 08 | 00 | |
| Story book brumes language | 300 | 300 | 00 | |
| Math khata purchase | 300 | 300 | 00 | |
| English & brumes khata | 300 | 300 | 00 | |
| Pencil purchase | 1200 | 1200 | 00 | |
| Ball pen purchase | 1200 | 1200 | 00 | |
| Eraser purchase | 600 | 600 | 00 | |
| Sharpener purchase | 600 | 600 | 00 | |
| Drawing pencil purchase | 600 | 600 | 00 | |
| Color poster paper purchase | 600 | 600 | 00 | |
| Game & toys purchase | 300 | 300 | 00 | |
| Art line, Skase pen | 600 | 600 | 00 | |
| Black board, Display board purchase | 8 | 8 | 00 | |
| White board purchase | 8 | 8 | 00 | |
| School dress purchase | 300 | 300 | 00 | |
| School bag purchase | 300 | 300 | 00 | |
| Weekly 3 days Nutrition snacks delivery | 96 day | 96 day | 00 | |
| Weekly 1 day improve lunch delivery | 32 Day | 32 day | 00 | |
| Total | | | | |

8. Child Welfare Project Phase-2"-Sylhet.

After ending of 1st phase of this project again this project had started July 2019 to June 2021 for two years. Due to COVID -19 this school was fully closed like other education institutions of Bangladesh. Some activities like provided task or assignment to the students in house to house and assess their reading and writing practices during hazing period. In this period expensed in salary head, house rent, stationery & printing, audit and miscellaneous and 1,500,357/- became unspent. If we get clearance about the next 02 year extension of the project with additional fund then we will submit project to the NGOAB for continue by unspent money.

9. Preprimary Education and Nutrition Service Project"-Pabna.

This project period officially was finished December 2021 but due to close school by instruction of govt. during COVID 19, some fund became unspent in several head. According to discussion with BDesH this project period extended unofficially January 2021 to June 2021 6 months. Under this project 10 child learning centers with 300 students are completed preprimary level. Each child learning center 30 students were active attendance in co-curriculum activities and with issue based learning sessions.

| Name Activities | Target | Achievement | Deviation | Remarks |
|--|--------|-------------|-----------|-------------------|
| Learning session/ class for students (day) | 126 | 112 | -14 | Govt. instruction |
| Average child attendance in class | 100% | 96% | -4% | COVID-19 |
| Tiffin distribution to the students | 72 | 72 | | |
| Guardian meeting | 06 | 06 | - | |
| Center management committee meeting | 02 | 02 | | |
| Health checkup to the students (day) | 06 | 06 | | |
| Treatment to the children (person) | - | 148 | | |
| Referral to govt. hospital | - | 08 | | |
| Blanket distribution | 300 | 300 | | |
| Food package distribution | 300 | 300 | | |
| Qurbani meat distribution | 300 | 300 | | |
| Total | | | | |

Due to char and remote area COVID-19 affect was not barrier to run the Child Learning Centers. According to health rule and social distance our ten teachers carry out their calass and co-curriculum activities.

10. Low Cost Cataract Surgery for the Destitute People of Bangladesh

This project is 2 years (July 2019 to June 2021) and for over all Bangladesh. For the easy and effective project implementation with less manpower and low cost ASEAB has divided project area into two regions one of the North Bengal and another one Dhaka based. This project is most essential for elderly poor people to protect their blindness by providing proper eye care services like screening and cataract surgery. First year target was 500 cataract surgery but achieved 512 and second year 500 but achieved 518. Total achieved 1030 persons.

1st Year status:

| SL | Name of district | Achievement | Remarks |
|----|--------------------|-------------|------------------------------------|
| 1 | Hobiganj | 123 | Moon General Hospital Hobiganj |
| | Total | 123 | |
| 2 | Dhaka | 112 | Dreesty Eye Hospital Dhaka |
| 3 | Comilla | 26 | MostafizGlucoma Eye Hospital Dhaka |
| 4 | Tangail | 1 | MostafizGlucoma Eye Hospital Dhaka |
| 5 | Barishal | 1 | MostafizGlucoma Eye Hospital Dhaka |
| 6 | B.Baria | 3 | MostafizGlucoma Eye Hospital Dhaka |
| 7 | Monshiganj | 1 | MostafizGlucoma Eye Hospital Dhaka |
| 8 | Faridpur | 1 | MostafizGlucoma Eye Hospital Dhaka |
| 9 | Narayngong | 1 | MostafizGlucoma Eye Hospital Dhaka |
| 10 | Potuakhali | 1 | MostafizGlucoma Eye Hospital Dhaka |
| | Total | 147 | |
| 11 | Bogura | 155 | Grameen GC Eye Hospital Bagura |
| 12 | Rajshahi | 13 | Grameen GC Eye Hospital Bagura |
| 13 | Pabna | 74 | Grameen GC Eye Hospital Bagura |
| | Total | 242 | |
| | Grand total | 512 | |

| Description | Male | Female | Total | 40-60 | 61-80 | Above 80 |
|-------------------|------|--------|-------|-------|-------|----------|
| Surgery completed | 248 | 264 | 512 | 96 | 390 | 26 |

2nd year status

| Name Activities | Target | Achievement | Deviation | Remarks |
|--|--------|-------------|-----------|----------------|
| Health Camp | 4 | 8 | | |
| Cataract Surgery (Medicine, spectacles ,lens Two time flow up | 492 | 492 | | Good condition |
| Pterygium | 15 | 15 | | Good condition |
| DCR | 11 | 11 | | Good condition |

| Description | Male | Female | Total | 40-60 | 61-80 | Above 80 |
|-------------------|------|--------|-------|-------|-------|----------|
| Surgery completed | 258 | 261 | 519 | 192 | 298 | 29 |

11. Shobuj Polly Jibika and Human Development Project” Phase-1 Mymensingh

This project duration was 5 years May 2016 to April 2021 called phase-1. In reporting period last year 06 month's data is given in table. Total groups 10, 300 beneficiaries has got seed money each 20,000 within 2nd year for operate Income Generating Activities (IGA). For COVID-19 this project beneficiaries IGA daily income was affected. But they were not idle in house but they had opened new alternative IGA for daily income from their local area. Most of them did not lose their IGA and capital.

General information:

| Duration | Budget | # of beneficiaries | # Of Beneficiaries up to December 2020 | # of groups | Remarks |
|-----------------------|------------|--------------------|--|-------------|-------------|
| May, 2016-April, 2021 | 14,800,000 | 300 | 277 | 10 | Drop out 23 |

Business Grant

| Grant received | Amount | Remarks |
|----------------|----------------------|---------|
| 300 | 300X20,000=6,000,000 | |

Present Beneficiaries: 277*20,000=5540000

Savings Accumulation Up to April 2021

| # of Members | Total Amount | Per Person | Remarks |
|--------------|--------------|------------|---|
| 277 | 937,660 | 3385 | Per person savings accumulated in 56 months per month tk.60 |

Investment receive by beneficiaries (balance up to April 2021)

| # of Beneficiaries | Total amount | Average per person | Remarks |
|--------------------|--------------|--------------------|------------------------------|
| 194 | 5,553,550 | 28,627 | 83 persons out of investment |

Investment in Income Generating Activity (IGA)

| Agriculture | Beef fattening | Milking cow rearing | Fish culture | Grocery | Small business | Van Polling | Remarks |
|--------------|----------------|---------------------|--------------|----------|----------------|-------------|----------------------------|
| 65/1,750,000 | 37/1,010,000 | 5/225,000 | 26/940,000 | 5/100000 | 11/222000 | 45/1307650 | |
| 20% | 13% | 2% | 9% | 2% | 4% | 16% | 34% did not get investment |

83 members (34%) did not get or take investment.

Benevolent fund:

| Total amount | Average per person | Remarks |
|--------------|--------------------|---------|
| 168,917 | 610 | |

Total fund up to April 2021

| Grant | Total Savings | Total Benevolent fund | Total profit | Total Capital | Expenditure | Bank balance | Fund in investment | Total fund |
|---------|---------------|-----------------------|--------------|---------------|-------------|--------------|--------------------|------------|
| 5540000 | 937,660 | 256,389 | 389,441 | 7,123,490 | 171,269 | 1,398,671 | 5,553,550 | 6,952,221 |

Total fund up to October 2021 of Shobuj Polly 1st Phase: 6,952,221

Breakdown of expenditure (Benevolent + profit/-)

Total expended: 171269

Local staff salary: 5000 Per Month (may-20 to Deember-20 Tk=26800)

Office rent: 1500 per month(January-20 to December-20 Tk=18000)

Office materials: 126469 (Chair, Table, File cabinet, Blanket, Fan, Jug, Bucket, File, Register, others form)

12. Shobuj Polly Livelihoods Project” Phase-2 Mymensingh.

This project duration is 02 years February 2019 to January 2022. This project's activities are ongoing. The COVID -19 affect has arised difficulties to operate the viable IGA.

General Information:

| Duration | Budget | # of beneficiaries | # Of Beneficiaries up to December 2020 | # of groups | Remarks |
|----------------------------------|---------|--------------------|--|-------------|---------|
| February, 2019- January, 2022 | 1237530 | 300 | 300 | 10 | 00 |

Business Grant

| Grant received | Amount | Remarks |
|----------------|----------------------|---------|
| 300 | 300X20,000=6,000,000 | |

Present Beneficiaries: 300*20,000=6,000,000

Target and Achievement in reporting period:

| Name Activities | Target | Achievement | Deviation | Remarks |
|---|---------|-------------|-----------|----------|
| Grant transfer | 3000000 | 3000000 | | |
| Business Skill training on different viable IGA | 200 | 200 | | |
| Savings accumulation | 202500 | 203980 | | |
| Investment distribution | 1200000 | 1475000 | | |
| Service Charge Collection | 120000 | 150000 | | |
| Varmi Compost | 150 | 150 | | |
| Tube well installation | 07 | 07 | | |
| Tree Plantation | 300 | 300 | | |
| Vegetable seed distribution | 300 | 300 | | |
| Orientation on online marketing | | 01 | | |
| Group member's leadership training | 40 | 40 | | |
| Orientation on vegetable selling by van | | 01 | | |
| Group meeting | 2400 | 1870 | -529 | COVID-19 |

Beneficiaries involve in different IGA:

| Agriculture | Beef fattening | Milking cow rearing | Fish culture | Grocery | Small business | Van Polling | Total | Remarks |
|-------------|----------------|---------------------|--------------|---------|----------------|-------------|-------|---------|
| 25% | 12% | 3% | 4% | 10% | 13% | 8% | 75% | |

75% out of 300 beneficiaries are involved with IGA.

Total fund up to October 2021:

| Investment in Field | Cash In bank | Total |
|---------------------|----------------|----------------|
| 2825523 | 4291231 | 7116750 |

13. Early Child Education and Women Skill Development Project"-Host Community Cox's Bazar.

This projects duration 02 years January 2020 to December 2021. This is the last year of this project. Due to COVID-19 and instruction of BDesh child education was closed in first year but in this year from October child education has opened by o2 education centers. Mainly this project done 45 numbers of beneficiaries tailoring training and distribute sewing machines. Total 60 members will get tailoring training within this period. And also awareness rising of adolescent girls through regular group meeting and follow-up house to house are the other main activities of this project. In second year we did not get fund from BDesh.

| Name Activities | Target | Achievement | Deviation | Remarks |
|---|--------|-------------|-----------|---------------------|
| Preprimary education for child | 120 | 60 | 60 | COVID and official |
| Education materials distribution for child (Book, kata, pen & pencil) | 120 | 60 | 60 | |
| Women group formation | 04 | 02 | 02 | COVID and official |
| Courtyard session | 24 | 18 | 06 | |
| Monthly women group meeting | 24 | 24 | 00 | |
| Adolescent group formation | 04 | 02 | 02 | |
| Monthly adolescent meeting | 24 | 18 | 06 | |
| Sowing training | 120 | 45 | 75 | |
| Group Savings | 120 | 45 | 75 | 1,22,300/- |
| Vegetable seed distribution | 120 | 30 | 90 | Unavailable of fund |

14. Shobuj Polly WASH Project- Mymensingh

Project period was August 2020 to July 2021 and responsible was DBC organization to implement the project.

This project has implanted in Haluaghat and Mymensingh Sadar Upazila's project's areas. Under this project 422 hygiene latrines distributed (3 rings, 01 slab and CI sheet for construction) among Shobuj Polly project beneficiaries, already installed 346 latrine rest of 76 will be completed within November 2021. Due to rain and COVID -19 affect this project did not complete within this project period. 10 tube wells installed in Haluaghat Shobuj Polly project area.

| Name Activities | Target | Achievement | Deviation | Remarks |
|--------------------------------|--------|-------------|-----------|--------------|
| Hygiene latrine installation | 422 | 346 | 76 | Work ongoing |
| Tube well installation | 10 | 10 | - | Haluaghat |
| Training on Water & Sanitation | 432 | 432 | | |

15. Shobuj Polly Water, Sanitation and Hygiene Project for Char Dwellers".-Pabna

This project started from 1st October 2021 and completed 31 December 2021.

| Name Activities | Target | Achievement | Deviation | Remarks |
|------------------------------|--------|-------------|-----------|---------------------|
| New Tube well installation | 20 | 05 | 15 | Work ongoing |
| Tube well repair | 50 | 02 | 48 | Work ongoing |
| Hygiene latrine construction | 200 | 0 | 200 | Preparation running |
| Latrine repair | 50 | 0 | 50 | Preparation running |
| Community Awareness Workshop | 01 | 01 | | |

Due to high water level this is not proper time to dig the pit and installation of latrine.

Around the November all material purchase and preparation will be completed and within December all installation will be completed.

16. Blanket Distribution Direct BDesh Representative of Bangladesh

Under this project ASEAB had no fund. DirectBDesh representative distributed blanket in 2021 among 1600 beneficiaries in the project areas like Pabna-500, Mymensingh-300, Sylhet-200, Cox's bazar Rohingya and Host community -600.

17. Oxygen Supply to Save the Lives of Corona Patients Phase-1

18. Oxygen Supply to Save the Lives of Corona Patients Phase-2

These two projects were most essential and important to save the lives of corona patients. Under this project in Phase-1 20 and Phase -2 35 total 55 Oxygen cylinders have provided support above 1019 corona patients. This project area was Dhaka, Pabna, Rajshahi, Khulna, Kustia, Mymensingh and Borguna districts. ASEAB operated this service through MASTUL Foundation in Dhaka, BDesh country director in Mymensingh, BDesh well-wisher in Borguna, ASEAB directly in Pabna, Khulna, Rajshahi and Kustia district.

Note: Phase -3 was taken approval and ended duration last October 2021 but fund did not send on that project. It should be closed by written application to NGOAB through the proper document of BDesh.

Challenges: 1. COVID-19 was the most challenge to achieve the target.

2. Unavailable fund and late release of fund from BDesh Foundation

Conclusion:

In this reporting period maximum projects have faced COVID-19 lockdown and other restriction. So, some activities have delayed to complete within project period. ASEAB always committed to ensure quality and quantity of works.

-----END-----